

Plenary #1: Valuing Inclusion

Arthur C. Evans, Jr., PhD

Chief Executive Officer
American Psychological Association

IIMHL/IIDL LEADERSHIP EXCHANGE

OCTOBER 26, 2022



**Full participation
by everyone**

Key Principles



- Inclusion is more than a value; it is an **imperative for excellence.**
- Our goal is **equity, not equality.** Solutions may not appear equal.
- ‘Inclusion’ in mental health, substance use, and disability **contexts may look different.**

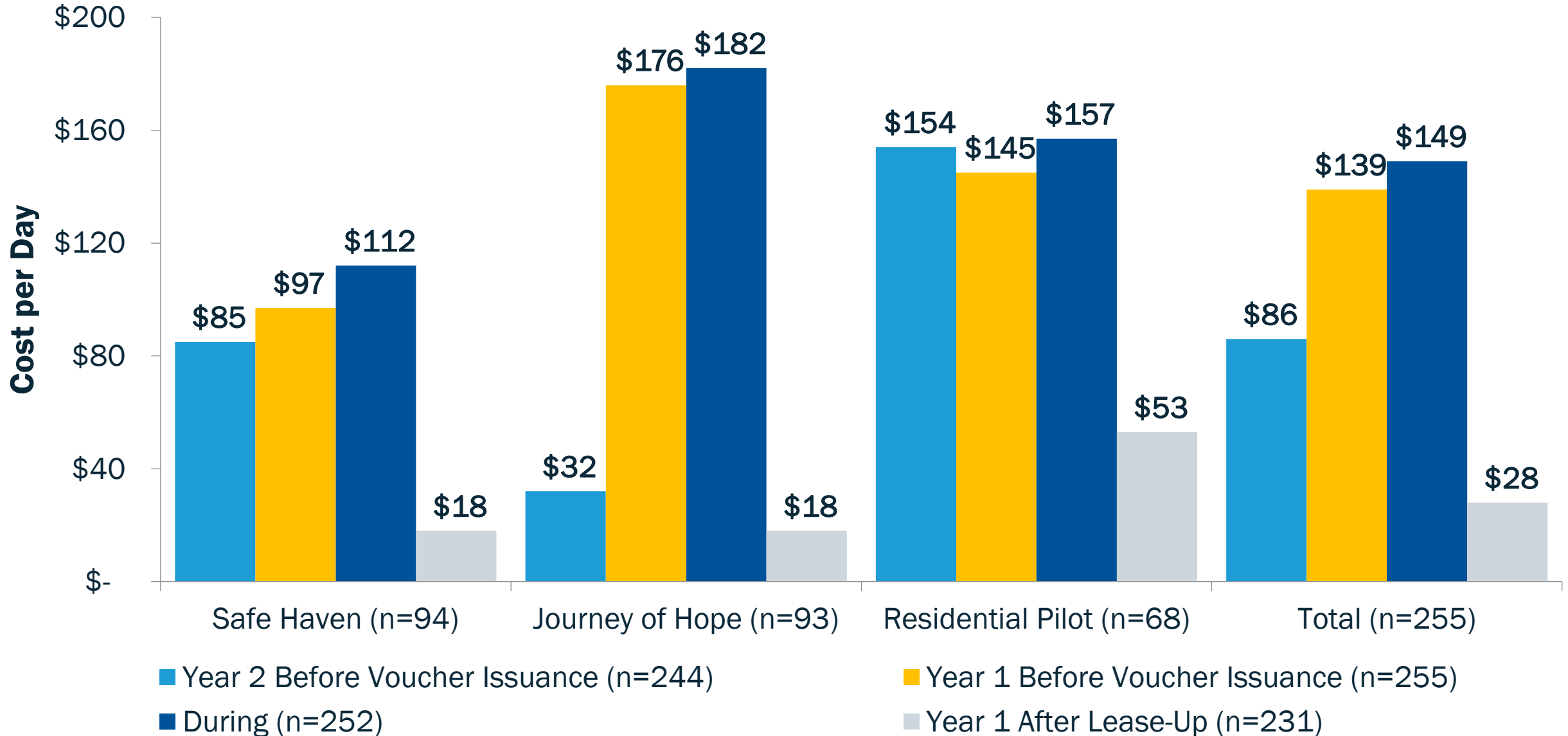
**CHOICE
&
OPTIONS**



Addressing Homelessness

- Created multiple pathways (one size does not fit all).
- Informed by research (e.g., housing first)
- Partnered for housing resources
- Leveraged Medicaid dollars for specialized services
- Used data to evaluate outcomes

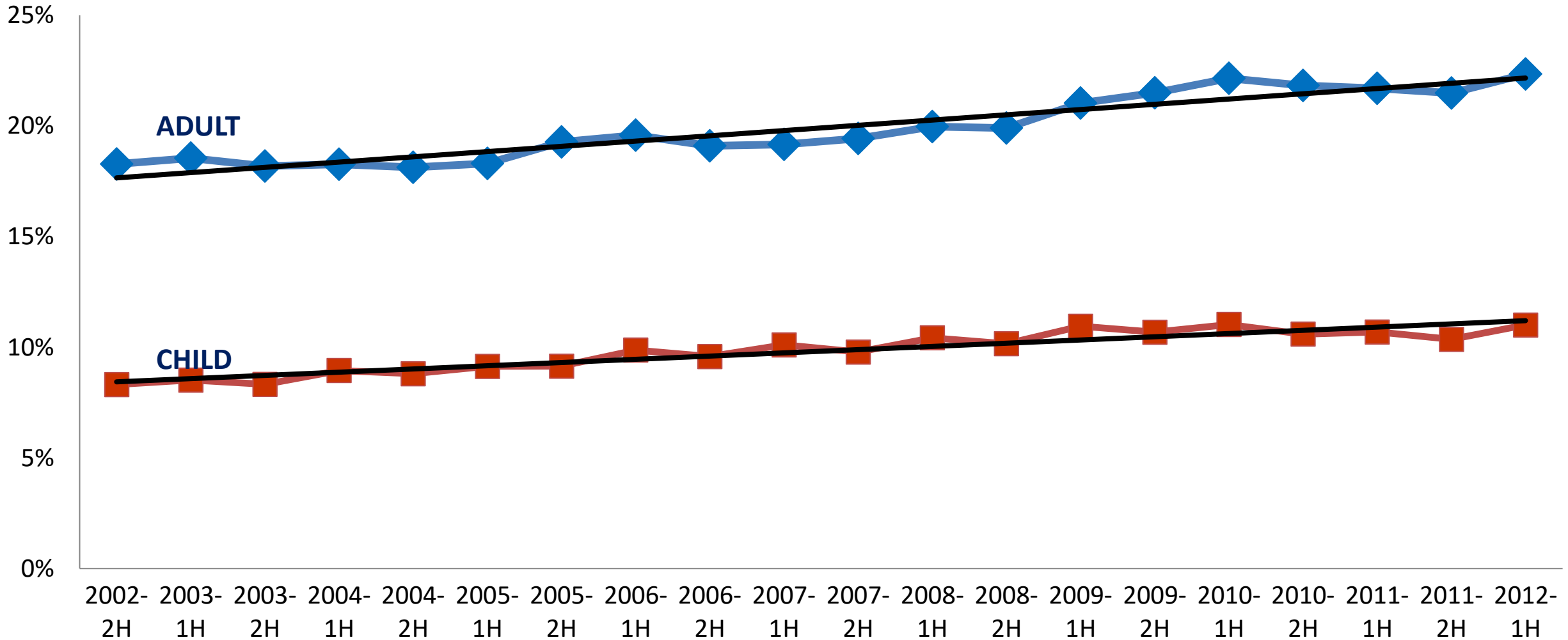
Average Cost Per Day Over Time



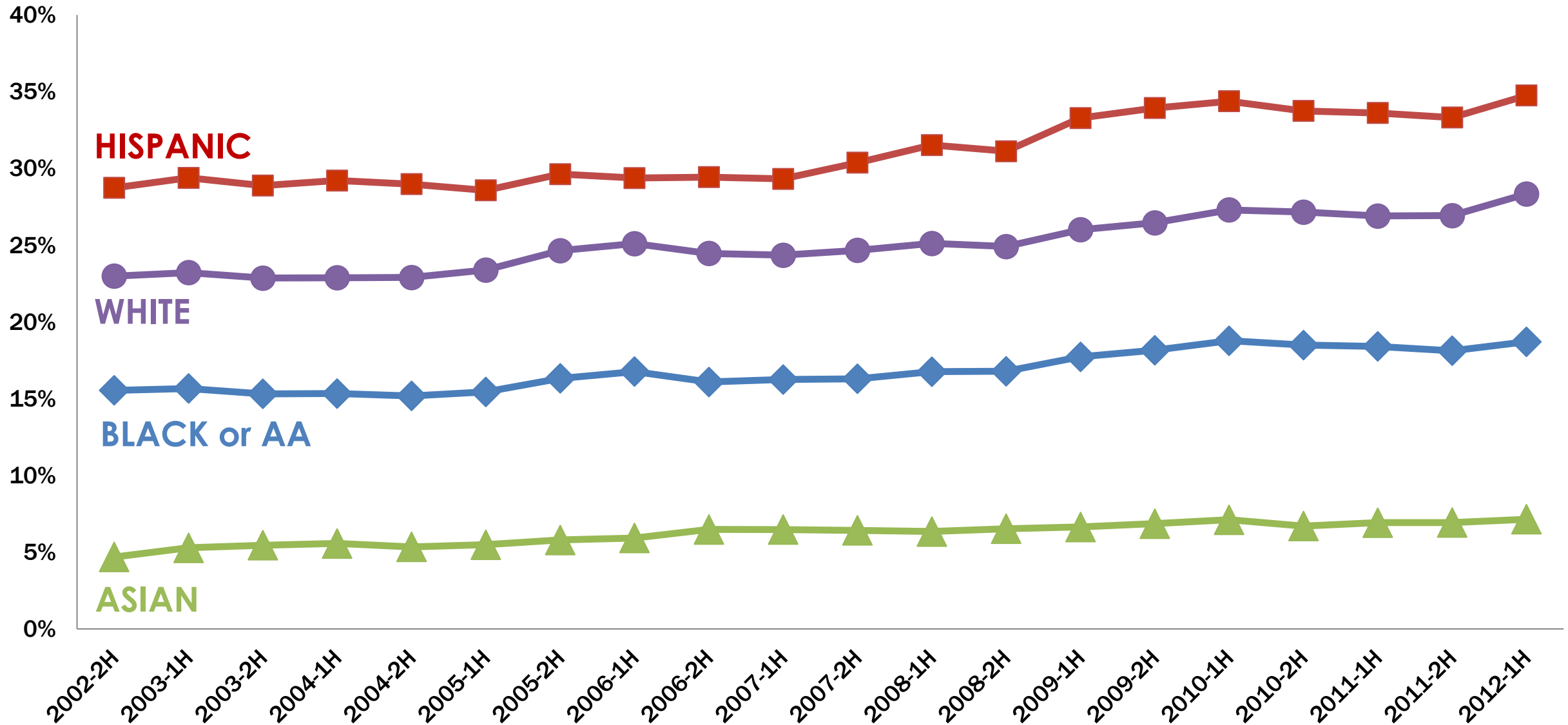
DATA

DIVERSIFYING TREATMENT: *Access to Behavioral Health Services*

Penetration Rate by Adult and Child Based on Paid Claims



Utilization Rates Differ by Race and Ethnicity



VOICE

**“Inherent in Every Community
is the Wisdom to
Solve Its Own Problems.”**



EMERY BLAGD



SUSTAINABILITY

*Institutionalizing
Change*

